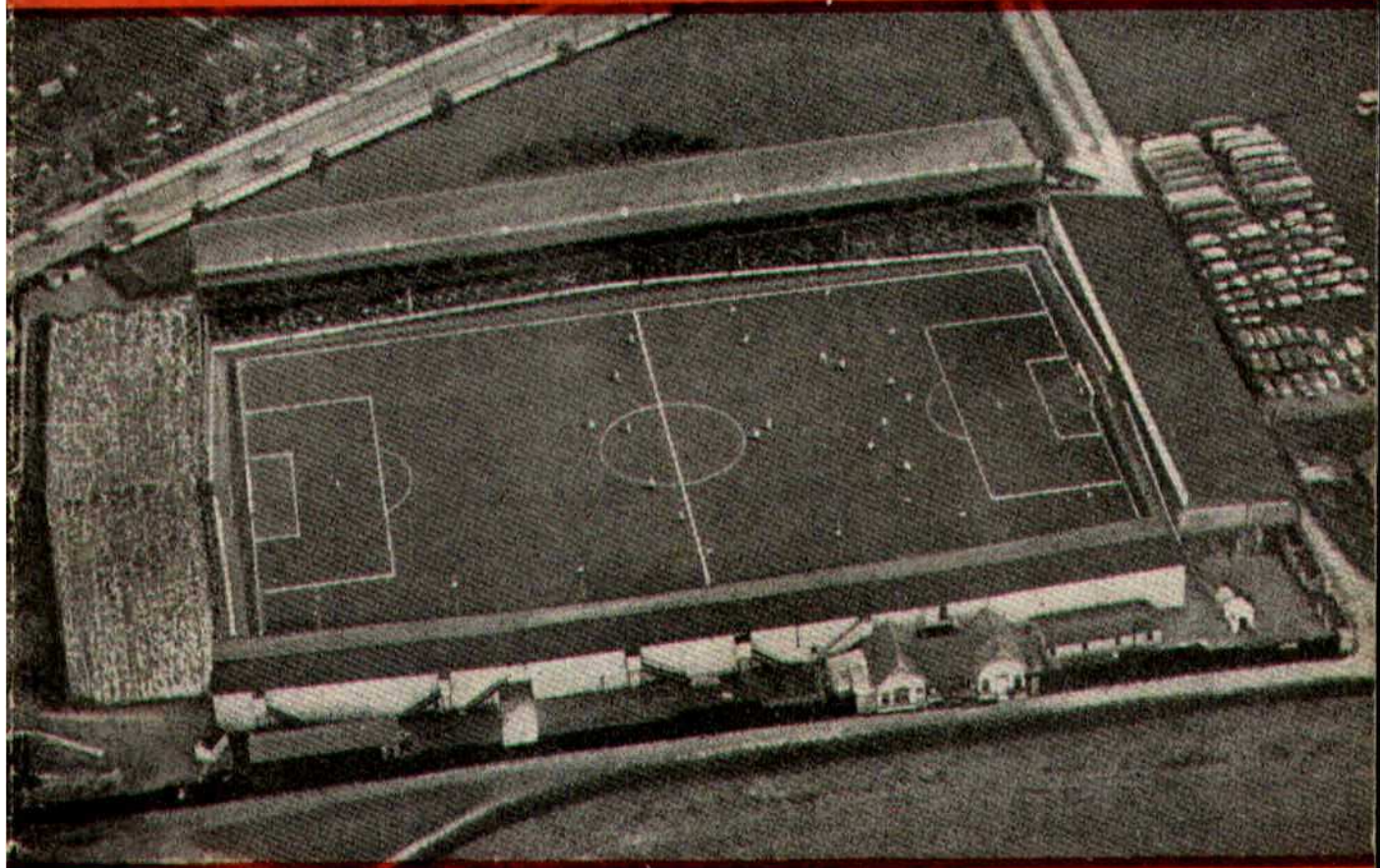




# SWINDON TOWN FOOTBALL CLUB



SATURDAY, JANUARY 21st, 1961

DIVISION III

**SWINDON TN. v. BURY**

Kick-off 3 p.m.

*Official Programme* **4d.**

**SOUTHERN LAUNDRY  
CO. LTD.**

*Launderers and Dry Cleaners*



TELEPHONE 4146  
STATION RD., SWINDON

GO MODERN — GO ELECTRIC  
for  
TELEVISION, RADIO AND  
DOMESTIC APPLIANCES

**D. ROBSON**

22 HAVELOCK STREET

6602 Swindon 6602

*Make your Goal the*

**EAGLE HOTEL**

(Prop.: Tom Hamilton)

WORTHINGTON :: GUINNESS

DEVENISH BEERS :: BASS

REGENT ST., SWINDON

**LITTLE & CO. LTD.**

The Name Linked with Service  
and Value

*The Popular Ladies' and Men's  
Complete Outfitters*



31-32 FLEET ST., SWINDON

Telephone 2831

**NEXT MATCH . . .**

**F.A. YOUTH CUP — FOURTH ROUND**

**SWINDON TN. v. CARDIFF C.**

**TUESDAY NEXT, JANUARY 24th, 1961**

**Kick-off 7.30 p.m.**

*Visit —*

**THE  
GRANADA CAFE**

60 CRICKLADE ROAD, SWINDON

Where good food  
is served at a  
reasonable price

**LEESE, ING & Co. Ltd.**

Incorporating BARKER & CO.

*Mineral Water and  
Squash Manufacturers*



**LANSDOWN RD., SWINDON**

TELEPHONE 2744/2320

**STADIUM SEATS**

SEND FOR OUR ILLUSTRATED BROCHURE

We can manufacture to suit your requirements

**MARTYN LYNshaw LIMITED, BOUNDARY WORKS,  
STRATTON ROAD, SWINDON**

# SWINDON TOWN FOOTBALL COMPANY LIMITED

Registered Office: COUNTY GROUND, SWINDON.



President: H. V. SLADE, Esq., O B.E., J.P.

## Directors:

Mr. W. J. CASTLE (Chairman),                      Mr. H. E. LANE (Vice-Chairman).  
Mr. B. T. HAMILTON (Hon. Treasurer),      Messrs. C. CHANDLER, J. DAVIES,  
R. FRICKER, C. J. GREEN, F. PLYER, H. WILLIAMS and K. H. WILMER.  
Manager: B. J. HEAD.                                      Secretary: R. A. MORSE.

---

**VOL. 11**

**SATURDAY, JANUARY 21st, 1961**

**No. 17**

---

## *Club Notes*

Fortunately the football dispute was settled on Wednesday, and so today we have the pleasure of entertaining Bury. We are sure everyone will enjoy today's game, if only for a feeling of relief. With the shadow of a strike hanging over everyone's head, the game has carried on under a certain amount of tension.

Bury are enjoying an excellent season, maintaining a high position in the league. We trust the weather will remain dry, and the ground firm, and everyone will see a grand game of football.

Today's match will be the last our chairman, Mr. Castle, will see for the next six weeks.

On Tuesday, he and Mrs. Castle depart on a holiday in a warmer part of the world. This will be the first real holiday (of any length) they have had for 30 years. We wish them well.

Our chairman has devoted much time and energy to the affairs of the club. He has never spared himself in his efforts to improve the status of football. He has always worked quietly, efficiently and unobtrusively — never seeking the limelight or any reward.

We trust they will both really enjoy to the full their holiday free

BE A GOOD SPORT  
SHOP AT  
**Ron's Pet Stores**  
RODBOURNE ROAD and  
CRICKLADE ROAD

Poultry Foods - Fresh Dog Meat

**WATSON'S  
CENTRAL NEWSAGENCY**  
LTD.  
*Swindon's Leading Wholesaler*  
1 WELLINGTON STREET, SWINDON  
Tel. 2049

**M. J. REYNOLDS**  
GROCER

152/154 CRICKLADE ROAD  
5479 SWINDON 5479

COOKED HAM OUR SPECIALITY

**L. WOLLEN**  
WINES & SPIRITS

✽

373 Cricklade Rd., Swindon

### CLUB NOTES—continued

from the cares of business and the worries of football. Good luck, Sir!

Meantime football continues in the capable hands of the vice-chairman, Mr. H. E. Lane, who like Mr. Castle has devoted many hours in the service of the club, and our worthy treasurer, Mr. B. T. Hamilton, who for so long has

been a bulwark of the Swindon Town Club. What he has done for football in this town no-one will ever know.

Swindon Football Club is indeed fortunate in its officers, probably the finest trio in the country.

Finally, a good home win will bring a very satisfactory conclusion to all the stresses and strains of the past few months.

Best wishes to the lads.

FOR ALL YOUR ANGLING NEEDS  
CONSULT

**FRANK WOODWARD**

Swindon's Fishing Tackle Specialist

25 HAVELOCK ST., SWINDON  
PHONE 3879

**H. E. LANE**

(REGENT STREET) LTD.

*The Pork Sausage Specialists*  
117 Victoria Rd., Swindon  
Telephone: 2336

**ARE YOU GOOD ENOUGH**  
to join the

**DUKE of EDINBURGH'S  
ROYAL REGIMENT ?**

*A fine career awaits you at*  
**ARMY INFORMATION OFFICE,**  
18 Faringdon Road, Swindon

# FIXTURES AND RESULTS TO DATE

## DIVISION III

<b>1960</b>			
Aug. 20	Halifax Tn. ....	H	1-1
22	Tranmere R. ....	A	2-2
27	Shrewsbury ....	A	1-1
31	Tranmere R. ....	H	1-0
Sept. 3	Walsall ....	H	1-0
6	Bristol C. ....	A	1-1
10	Bury ....	A	0-3
17	Chesterfield ....	H	2-0
20	Watford ....	A	0-1
24	Southend U. ....	A	2-0
28	Watford ....	H	1-2
Oct. 1	Port Vale ....	H	6-0
5	Torquay U. ....	A	1-1
8	Notts C. ....	A	0-1
12	Shrewsbury (Cup) ..	H	1-1
15	Bournemouth ....	H	0-1
19	Bristol C. ....	H	3-1
22	Bradford C. ....	A	1-2
29	Barnsley ....	H	P
Nov. 5	Bath City (Cup) ...	H	2-2
10	Bath City (Cup) ...	A	6-4
12	Colchester U. ....	H	0-2
19	Grimsby T. ....	A	0-0 A
26	Shrewsbury (Cup) ..	H	0-1
Dec. 3	Reading ....	A	1-1
10	Coventry C. ....	H	1-2
17	Halifax T. ....	A	1-1
24	Brentford ....	A	1-2
31	Shrewsbury ....	H	2-2
<b>1961</b>			
Jan. 7	(3) Brentford ....	H	1-1
14	Walsall ....	A	0-3 A
21	Bury ....	H	
28	(4) Newport C. ....	A	
Feb. 4	Chesterfield ....	A	
11	Southend U. ....	H	
18	(5) Port Vale ....	A	
25	Reading ....	H	
Mar. 4	(6) Bournem'th ....	A	
11	Bradford C. ....	H	
18	(S.F.) Barnsley ....	A	
25	Newport C. ....	H	
31	Q.P.R. ....	A	
Apr. 1	Colchester U. ....	A	
3	Q.P.R. ....	H	
8	Grimsby T. ....	H	
15	Hull C. ....	A	
22	Notts C. ....	H	
26	Torquay U. ....	H	
29	Coventry C. ....	A	
May 6	(Final) .....		

## FOOTBALL COMBINATION

<b>1960</b>			
Aug. 20	24 Aldershot .....	A	2-4
	27 Shrewsbury T. ....	H	3-0
Sept. 3	Millwall .....	A	3-4
	7 Fulham .....	A	1-1
	10 Southend U. ....	H	1-2
	13 Brentford .....	A	0-2
	24 Brentford .....	H	0-1
	27 Northampton .....	A	0-0
Oct. 1	8 Mansfield T. ....	H	4-2
	15 Reading .....	A	0-1
	22 Swansea T. ....	H	1-1
	29 Plymouth A. ....	A	0-0
Nov. 5	Crystal P. ....	H	P
	12 Colchester U. ....	A	1-2
	19 Notts C. ....	H	P
	26 Coventry C. ....	A	P
Dec. 3	Luton Tn. ....	H	P
	10 Mansfield T. ....	A	1-2
	17 Northampton .....	H	1-3
	24 Bristol R. ....	H	1-1
	26 Bristol R. ....	A	0-6
	31 Shrewsbury T. ....	A	1-3
<b>1961</b>			
Jan. 7	Peterborough U. ....	A	1-3
	14 Millwall .....	H	3-3
	21 Southend U. ....	A	
	28 Peterborough U. ...	H	
Feb. 4	Fulham .....	H	
	11 .....		
	18 Aldershot .....	H	
	25 Swansea Tn. ....	A	
Mar. 4	Plymouth A. ....	H	
	11 Crystal P. ....	A	
	18 Colchester U. ....	H	
	25 Notts C. ....	A	
	31 Q.P.R. ....	H	
Apr. 1	Coventry C. ....	H	
	3 Q.P.R. ....	A	
	8 Luton T. ....	A	
	15 Reading .....	H	
	22 .....		
	29 .....		

---

## Our Visitors

### BURY F.C.

Narrowly failing in their bid to return to the Second Division last season, Bury are considered one of the more powerful sides in the Third Division, and have been in challenging positions since the new League was formed.

Apart from Tranmere Rovers, they are the only Lancashire members and the compact enclosure at Gigg Lane is traditionally famous for its wonderful playing area and a fine record of senior football.

Last season their ground record of 34,000 was broken by the Cup-Tie against neighbours Bolton Wanderers, and they were most unfortunate to go down in the re-play at Burnden Park after leading 2—1 until five minutes from time.

The present Manager, Mr. David Russell, has been in charge for over five years and is confident that his staff have the ability to secure the Club's return to Senior status.

With a fine blend of youth and experience and lots of team spirit, the Men from Bury have that determination which is typical of Lancashire sides, and particularly in East Lancashire which is the recognised power house of first class football.

### PEN PICTURES OF THE PLAYERS

#### JOHN HEATH (Goalkeeper)

Born in Heywood, Lancashire, aged 22, was once given a trial by Blackburn Rovers but joined Bury in 1957 and has proved a great acquisition. 6ft. tall and almost 12 stone, his style appeals to those who like the spectacular, daring type of keeper.

#### EDDIE ROBERTSON (Right Back)

A Scot, Eddie joined Bury as an inside forward on his return from the R.A.F.

in 1956, but subsequently found his best form as a defender and was selected for the North versus South in his first season. Previous Club—Linlithgow Rose, Edinburgh.

#### BOBBIE CONROY (Left Back)

From Ashfield Juniors, Bobbie is tough and relentless. Great Club player. Originally a winger hence his speed and occasional sallies up field.

#### BRIAN TURNER (Right Half)

Classical stylist, Brian is a Manchester man and a fine constructive player. Ideally built for this position he graduated from the junior ranks in 1957 and is considered one of the team's keymen in a fine defence.

#### JOHN McGRATH (Centre Half)

Big John regarded by many famous sports writers as a potential Under-23 Star played in a select F.A. Side at Newcastle last season and came through with great credit. Cartilage trouble in December kept him out of the team for three months, but now, fully recovered, he is all set to again take the eye of the selectors. All the qualities that go into a stylish pivot are attributed to John and this product of Manchester Schoolboy Football should be a great factor in the future ambitions of the Gigg Laners.

#### GORDON ATHERTON (Left Half)

Dynamic Atherton! What a great-hearted wing half. Born in Horwich near Bolton, Gordon is an enthusiast and was schooled through the tough Lancashire Combination before he signed professional for Bury in 1955. His constructive work is of great value to the team and his popularity both home and away has been well earned by a keen approach and a zest for every match.

#### BILL CALDER (Inside Right)

Joined Bury from Leicester and is now in his second season. Strong and forceful, Bill is equally at home in the centre forward position, and his keen

## C. Dunn & Son

BUILDERS & DECORATORS  
Alterations, Renovations, Conversions  
Plumbers and Sanitary Engineers  
503 CRICKLADE ROAD Tel. 2522

## NOTTON'S CAFE

COUNTY ROAD  
200 yards from Ground  
**RIGHT ON THE BALL**

## County Ground Hotel

(Adjoining Football Ground)  
FULLY LICENSED  
**ARKELL'S ALES at THEIR BEST**  
Mine Host—Mr. Geo. Baillie

AT THE COUNTY GROUND TODAY—

## WISES CATERING SERVICE

SWINDON'S LEADING OUTSIDE CATERERS  
and for all your Special Events  
55 GODDARD AVE. Phone 5562

### OUR VISITORS—Continued

goal sense earned him double figures last season. Aged 23. Born Glasgow.

#### **DONALD WATSON (Centre Forward)**

Former Sheffield Wednesday player, Donald is now well established at Bury. Born Barnsley, he moved from Sheffield to Lincoln and then on to Gigg Lane after only a season at Lincoln. Very strong and uses the ball with great intelligence. Aged 28. Manager David Russell signed him during 1957-58 close season.

#### **ALAN JACKSON (Inside Left)**

Aged 22, joined Bury from Wolves last season and was top goal scorer in the promotion bid. Powerfully built and possessed of a strong shot, his style and directness appeals to all who admire the Wolves attacking methods. Represented Wolves in their European

Cup Games in Season 1958-59. 5ft. 10in. 11st. 6lb. Born Burton-on-Trent.

#### **JOHNNY HUBBARD (Outside Left)**

Born Pretoria, South Africa. Joined Glasgow Rangers as a boy and soon established himself as a firm favourite with the Rangers. Played in all their European Cup Series and joined Bury with a most enviable record. Known over the border as "King of the Penalty Kick", he is entertainment personified. Played in every game last season and really enjoys his game.

#### **TONY BARTLEY (Outside Right)**

Tony is a calm studied player. Was with Bolton Wanderers for a short spell before moving to Bury last season. With a keen goal sense he is admirably built and possessed of a fast turn of speed. Born Stalybridge, Cheshire. Aged 23.

## GODDARD & Co.

*Wholesale and Retail*

WINE, SPIRIT, BEER  
AND CIDER MERCHANTS



9 REGENT STREET, SWINDON  
Telephone 2415



Also at  
4 WINGATE PARADE, SWINDON

We are your MAIN DEALER for  
**VAUXHALL** and **JAGUAR** cars  
**BEDFORD** Vans and Trucks  
Etc.

Any make of Car or Truck  
supplied - Used Vehicles a  
specialised part of our  
business.



## SKURRAY'S

SWINDON

Telephone: 2266

# STRANGE'S GARAGE

Austin Dealers in Cars and Light Vans  
Agents for Vespa Scooters  
Second-hand Cars Bought and Sold

## WOOTTON BASSETT

Telephone 216

# Swindon Bacon Curing Co. Ltd.

*Specialists in  
Bacon, Pork & Cooked Ham*

50 FLEET STREET  
SWINDON

Telephone: 2122

## WARNES (Swindon) Ltd.

ELECTRICAL CONTRACTORS  
RADIO AND TELEVISION  
Contractors to:  
SWINDON TOWN FOOTBALL CLUB  
\* \* \*

51/52 COMMERCIAL RD., SWINDON  
'Phone 6486/6694

160 COUNTY RD., SWINDON  
'Phone 6346/7

9 SWINDON ST., HIGHWORTH  
'Phone 379

## HALF-DAY EXCURSION BOOKINGS

Every Wednesday  
to

### LONDON 12/3

from SWINDON JUNCTION  
Depart 2.32 p.m. and 4.5 p.m.  
(Refreshment Car Trains)  
Return from Paddington 6.35, 8.5,  
8.55, 9.25, 10.30, 11.50 p.m. the  
same day, or 1.0 (night).

**BRITISH RAILWAYS**

Western Region

## W. B. CARTER

Newsagent, Tobacconist and Confectioner

Large selection of Boxes of Chocolates  
always in stock

CORONA, TIZER, DRINKS, Etc.

Agents for Wall's Ice Cream

188/190 FERNDAL RD., SWINDON

Telephone: 3089

# MILLS & MER

H  
O  
U  
S  
E  
F  
U  
R  
N  
I  
S  
H  
E  
R  
S

## SWINDON TOWN v. BURY

RIGHT WING

SWINDON T  
Colours: RED SHIRTS,  
Burton

Wollen (2)

Morgan (4)

Owen (5)

Darcy (7)

Hunt (8)

Summerbee

Referee:

Mr. J. Finney  
(Hereford)



Hubbard (11) Jackson (10) Watson

Atherton (6)

McGrath

Conroy (3)

Heath

BURY

LEFT WING

These teams are subject

16-17 BRIDGE ST. S

## Blunsdon Abbey Caravans Ltd.

N.C.C. Approved Trader

TRY CONSULTING US

FOR

SALE, SITES & SERVICE

A Home of your own in a few years  
and no Landlord

Tel. Blunsdon 281

For Our Information Service



*"Keep that Team spirit"*  
**JOINT TERRITORIAL  
 THE ARMY**

Units in WILTSHIRE  
 still need recruits

Apply for details by letter or by  
 phone or in person at your local  
 Drill Hall

**THE PLESSEY COMPANY  
 Ltd.**

After years of achievement have great  
 expansion plans for the future.

**TECHNICAL STAFF  
 CLERICAL STAFF  
 MANUAL WORKERS**

are essential for this progress.

Interested persons please apply to the  
 Personnel Department.

**ERRICKS LTD.**

U P H O L S T E R E R S • R E M O V A L S

Kick-off 3 p.m.

NDON TOWN

D SHIRTS, WHITE SHORTS

LEFT WING

Burton

Trollope (3)

Dwen (5)

Woodruff (6)

Merbee (9)

Jackson (10)

Jones (11)

Linesmen:

*Red Flag*—

Mr. R. J. Ingram  
 (Cardiff)

*Yellow Flag*—

Mr. W. J. Paradise  
 (Frome)

Watson (9)

Calder (8)

Bartley (7)

McGrath (5)

Turner (4)

Robertson (2)

Heath

BURY

are subject to alteration

RIGHT WING

**T. SWINDON**

PHONE  
 5365



INSIST ON  
**Garrard**  
 EQUIPMENT



For Superb Tape and Record Playing



Fitted by the World's leading  
 manufacturers.

**Haskins Garage**

Sales : WROUGHTON : Service  
 263

AUSTIN  
 LAND ROVER

MORRIS  
 ROVER

SWINDON'S NEW SNACK  
 AND GRILL BAR

**HARLEQUIN**

90 VICTORIA ROAD, SWINDON  
 Open Daily 8.30 a.m. - 9.0 p.m.  
 The Best Draw Home or Away!

"DO IT YOURSELF"

**BAYNES (SWINDON)  
 TIMBER Co. Ltd.**

County Works, County Road, Swindon  
 Tel. 4112/3

"THE PERFECT CENTRE"

for all "do-it-yourself" enthusiasts.  
 Call, write, phone your requirements:  
 Hardwoods, softwoods, moulding, ply-  
 wood, Formica and Perstorp, etc., all  
 cut to your given sizes.

"IF WE HAVEN'T GOT IT — WE'LL GET IT!"  
 Comprehensive catalogue sent on request  
 One minute from the Ground

ONE QUALITY ONLY -- THE BEST!

FRESH SUPPLIES DAILY

*York Road Fisheries*

SWINDON

WET, DRY or FRIED Tel.: 3680

**DEMPSTER ENTERPRISES**, offer a modern fleet of 4 and 6 seater self-drive hire cars, for your pleasure and convenience. For advance bookings apply:-

**Dempster Enterprises**

4 MILTON ROAD, SWINDON

Tel. 6603

Rent your T.V. - Washing Machines  
Spin Dryers - Electrical Installations  
from:

**D. V. HOLLAMBY LTD.**

138 High St., Wootton Bassett, Wilts.

Telephone 295

ALL LEADING MAKES IN STOCK

**Howard Autos**, Swindon's Main Cotton Motor Cycle distributors always have a good selection of guaranteed used cars for you to choose from.

**HOWARD AUTOS**

3 WELLINGTON ST., SWINDON

Tel. 6603

### STAND TICKETS

Tickets for seats in the Old and New Stands may be booked in advance. Postal applications should be accompanied by a remittance and stamped addressed envelope. Tickets ordered by telephone must be collected not later than 12 noon on the day of the match, otherwise they will not be reserved.

Prices for League Matches:—

**New Stand**—Block C—6/- (Centre)

Blocks B and D—5/- (Side Stands)

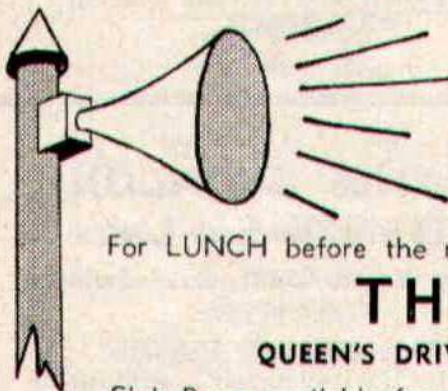
Blocks A and E—3/6 (Wing Stands)

**Old Stand**—Centre Box—7/6

Block H—5/- (Centre)

Blocks F, G and I—3/6 (Side Stands)

Postal applications to—Secretary, Swindon Town F.C., County Ground, Swindon, Wilts. Telephone Swindon 2118.



**A SPECIAL  
MESSAGE**

For LUNCH before the match—or a SNACK afterwards, visit

**THE BULLDOG**

QUEEN'S DRIVE, WALCOT ESTATE — Tel. 6877

Club Room available for meetings, private parties, wedding receptions, etc.

A SIMONDS TAVERN

---

## Supporters' Club

### Notes

We write these notes at a time when it is uncertain whether or not they will be read, but all lovers of Association Football will hope that the difficulties and differences between the various parties will be resolved, and that the main business—the matches—will proceed as usual.

It is to be hoped then, that with a more settled future, there will be fewer incidents of the type which cause so much irritation to the spectators—the time-wasting tactics (which have become so common), being particularly undesirable.

Supporters will tolerate much, as has been shown often in the past, all over the country, but they expect 90 minutes football.

Those who attended the Combination match last Saturday must have felt extremely encouraged by the display given by our very youthful team.

It was a very good performance to build up a commanding lead of 3—0, but, eventually, the trying conditions (for such young players) and the lack of an experienced guiding influence,

proved too much of a handicap, and the match ended in a 3—3 draw.

However, we saw enough to know that there were some very good players in the making.

We are now in a position to make a further payment of £1,200, out of Competition profits, to the Football Club.

Of this sum £200 will go to the Special Floodlight Fund, and £1,000 to the general funds of the Football Club, for use at the discretion of the Directors.

The writer in a certain Sunday newspaper is requested to note—"no strings attached" to the £1,000.

We would remind our members and supporters generally, once again, of the Dance to be held at Messrs. McIlroys on Friday, 27th January, and hope that this event will be well patronised.

Tickets are 12/6 single and £1-1-0 double, and may be obtained from Committee members.

It is unfortunate that an "All-Night" Jazz session has been arranged on the same night, elsewhere in the town, but we feel confident that there is room for both events.

Holders of lucky programmes on 7th January were:—2951, Mr. J. A. Francis, Ferndale Road, Swindon, No. 505, not claimed.

---

## KEY OF THE BOARD

Half-time scores will be given in two sections. First Section indicated by **|1|**. Second Section indicated by **|2|**.

### FIRST SECTION

- A—Aston Villa v. Blackburn R.
- B—Bolton W. v. Blackpool
- C—Burnley v. West Brom. A.
- D—Fulham v. Sheffield W.
- E—Leicester v. Manchester U.
- F—Manchester C. v. Newcastle U.
- G—Nottingham F. v. Cardiff C.
- H—Preston N.E. v. Birmingham
- I—Tottenham v. Arsenal
- J—West Ham v. Chelsea
- K—Wolverhampton v. Everton
- L—Bristol R. v. Scunthorpe
- M—Charlton v. Swansea
- N—Derby C. v. Leyton O.
- O—Huddersfield v. Leeds
- P—Norwich v. Luton
- Q—Rotherham v. Brighton
- R—Sheffield Utd. v. Stoke
- S—Southampton v. Middlesbrough
- T—Sunderland v. Portsmouth

### SECOND SECTION

- A—Barnsley v. Notts. C.
- B—Bradford C. v. Bournemouth
- C—Grimsby v. Coventry
- D—Hull v. Reading
- E—Watford v. Shrewsbury
- F—Aldershot v. Gillingham
- G—Crewe v. York
- H—Crystal P. v. Wrexham
- I—Doncaster v. Hartlepoons
- J—Exeter v. Stockport
- K—Northampton v. Bradford
- L—Oldham v. Barrow
- M—Southport v. Rochdale
- N—Workington v. Millwall

The Rendezvous of all Sportsmen . . .

## THE CROWN INN

(Host: Frank Plyer)

Arkell's Best Ales : Fully Licensed  
Snacks, etc.

STRATTON ST. MARGARET Tel. 2339

"SUPPORT YOUR HOME"

## CIVIL DEFENCE

plays a vital part in saving lives

Particulars:

CIVIC OFFICES, SWINDON

WIN OR LOSE!

THE FOOD IN THE

## China Restaurant

IS BEST

107 COMMERCIAL ROAD

SWINDON 6888

Open Daily 12.0 a.m. - 11.30 p.m.

For all Chinese and English Dishes

**SPECTATORS ARE REQUESTED  
NOT TO CROSS THE PLAYING  
PITCH AT THE END OF  
THE GAME**

## COATE GARAGE



THE ALCOHOL FUEL

REPAIRS  
SERVICING  
TYRES

★

OVERHAULS  
REBORING  
WELDING

Props.: E. V. & W. H. Mattick  
MARLBOROUGH ROAD, SWINDON

For something a little different, try

## DON JONES

HIGH CLASS CONFECTIONER  
AND TOBACCONIST

Always a good selection of  
SUCHARDS' - TOBLER  
TERRY'S

Quality Chocolates and Presentation  
Boxes

112 COMMERCIAL ROAD

6012

SWINDON

6012

*Typewriters*  
from £10

FULLY GUARANTEED

**DOBELL SHEARMAN  
& CO. LTD.**

26 HIGH ST. & 33 FARINGDON RD.,  
SWINDON Telephone 2312

Only 800 yards to your Dream Car —  
**NEW ALPHA MOTOR Co.**  
(SWINDON) LTD.

**QUEENS DRIVE, SWINDON**

Tel. 5062/63

For Top Quality Used Cars at the  
Lowest Prices

Open 7 days per week from 7 a.m. to 10.30 p.m.

### DIVISION III

	P.	W.	D.	L.	F.	A.	Pts.
Bury .....	26	16	4	6	71	31	36
Queen's Park Rangers .....	27	14	8	5	57	35	36
Grimsby Town .....	27	15	6	6	55	40	36
Walsall .....	26	15	3	8	53	39	33
Notts County .....	26	13	7	6	55	46	33
Torquay Utd. ....	26	11	10	5	52	40	32
Halifax Town .....	26	11	9	6	50	45	31
Port Vale .....	26	11	8	7	61	46	30
Watford .....	25	9	10	6	44	40	28
Newport County .....	24	10	7	7	51	48	27
Barnsley .....	25	12	3	10	45	47	27
Shrewsbury Town .....	26	8	10	8	48	49	26
Hull City .....	27	10	5	12	43	42	25
Coventry City .....	26	9	7	10	46	48	25
Southend United .....	27	8	7	12	40	47	23
Bournemouth .....	28	9	5	14	37	50	23
Brentford .....	27	8	7	12	34	47	23
<b>SWINDON TOWN</b> .....	<b>25</b>	<b>6</b>	<b>9</b>	<b>10</b>	<b>32</b>	<b>31</b>	<b>21</b>
Bristol City .....	26	8	5	13	40	44	21
Reading .....	26	7	7	12	42	58	21
Bradford City .....	24	5	9	10	33	41	19
Colchester Utd. ....	26	6	7	13	37	52	19
Tranmere Rovers .....	27	6	6	15	45	80	18
Chesterfield .....	27	3	7	17	33	58	13

**Chappell's Funeral  
Service**

(Fun. Dir.: A. A. Winchcombe)

**196 COUNTY ROAD  
SWINDON**

24-hour Service

Tel. 6073

*Don't buy a Car, Motor Cycle or Scooter  
until you have seen the wide selection we  
have to offer at*

**CORONATION  
CAR SALES**

**67/68 VICTORIA ROAD**

Telephone: 6106

---

**SEA VIEW HOLIDAY  
CAMP**

YOUR HOST—Mr. BENNETT

✦  
**WYKE REGIS - WEYMOUTH  
Dorset**

"COAL!"  
"COAL!"  
"COAL!"

**J. WILMER**  
ST. MARGARET'S ROAD, SWINDON  
Telephone 22535

---

MEET YOUR FRIENDS AT THE

***Southbrook Inn***

(Hosts: Mr. and Mrs. Jack Scutts)

FULLY LICENSED  
CLINCH BEERS, ETC.

**SOUTHBROOK STREET, SWINDON**  
Tel.: 5837

**STOP ! LOOK !**

**NU-HOMES**

For all Household Fitments

Paints - Emulsions - Wallpapers  
Kitchen Units and Bathroom Suites,  
etc.

**176a Manchester Road**  
TELEPHONE 2178

---

**FORTHCOMING MATCH . . .**

FOOTBALL COMBINATION

**SWINDON v. PETERBOROUGH**

**SATURDAY NEXT, JANUARY 28th, 1961**

**Kick-off 3 p.m.**

---

**TO ALL LOCAL SPORTS  
CLUBS**

•  
It is quicker and cheaper  
to WASH and DRY your  
Football Clothes at

**The Launderettes**

at  
**59 WELLINGTON STREET**

or  
**186 VICTORIA ROAD  
SWINDON**

*For High Class  
Central Heating, Plumbing  
Painting and Decorating  
Electrical Installations  
and Repairs*

✦  
**NORTH WILTS**

Sanitary & Heating  
Co. Ltd.

**NEWPORT ST., SWINDON**

'Phone: 4201

---

*Always at your service*

**L. BIBBY**

For all Types, Rags, Iron and Metal,  
etc. Spot Cash Paid. Please Telephone  
2101 and our van will call.  
THE PADDOCK, ERMIN STREET  
STRATTON ST. MARGARET

**Walcot Greengrocer**

G. E. STAMMERS

✽

**1 SUSSEX SQUARE  
SWINDON**

SWINDON **2526**

*CAN ALSO BE YOUR LUCKY NUMBER ! ! !*

*if you ring*

**HOLMES & LUCAS**

14A REGENT STREET :: SWINDON

*for all your*

**TELEVISION, RADIO AND ELECTRICAL REQUIREMENTS**

**LUCKY PROGRAMME**

Please retain your programme. An announcement will be made at half-time of two numbers and the holders will be given a stand seat at the next Division III game. The persons who purchased the programmes bearing the winning numbers should call at the office after the game and claim their seats.

**1360**

**FRIED FISH AND CHIPS**

Always Fresh - Always Hot

**WALCOT FISHERIES**  
**Sussex Square**

Wet fish and frozen foods all refrigerated display.

Telephone Swindon 2731

**6 REGENT CIRCUS (NEAR G.P.O.)**

OR FOR YOUR FOOTBALL OUTINGS  
BOOK YOUR COACH FOR PRIVATE PARTIES  
Main Booking Agents for Millers Coaches  
Agents for Wessex School of Motoring  
Newsagents : Tobacconists : Confectioners  
A. J. D. WOODHOUSE & A. SMITH

**HATTON'S NEWSAGENCY**

For Insurance or Hire Purchase

CARS - CARAVANS - MOTOR CYCLES, etc.

Consult

**D. & H. HENTY LTD.**

54 COMMERCIAL RD., SWINDON  
SWINDON 5258

**PANKHURST**

**The Palace, Gorse Hill,  
Swindon.**

MOTOR CYCLE - SCOOTER AND  
THREE-WHEELER SPECIALISTS

Open Mon. to Sat. 9 a.m. - 8 p.m. Phone 5466

To be well shod—

*is to be well dressed*

**Victoria Shoe Repairs**

129 VICTORIA ROAD, SWINDON

First class materials and workmanship

**Maylott Studios**

For GROUP & SPORT Photographs  
OFFICIAL PHOTOGRAPHER TO  
SWINDON TOWN FOOTBALL CLUB

**31 FARINGDON RD. Tel. 2792**